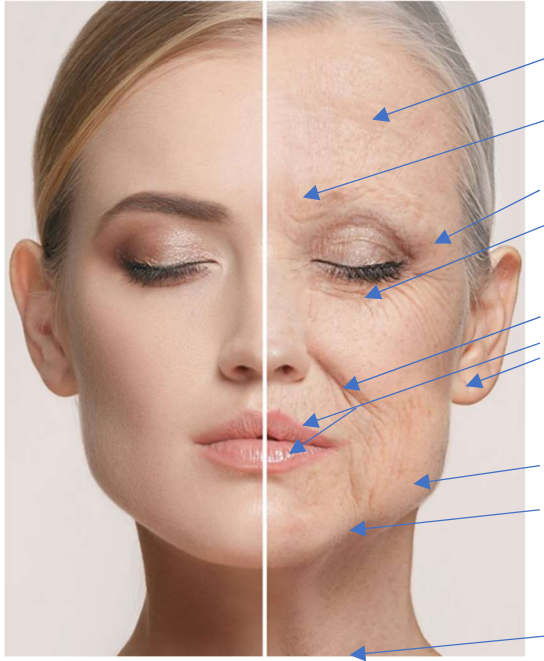




Cosmetic Consultation for _____ Age: _____ Date _____

Cosmetic Past History and Skin Disease issues:



SKINCARE OPTIONS

Defenage Trio stimulates skin stem cells to create young skin cells. Nightly Defenage Neck & Hand/Body

SkinMedica TNS Essential Serum once daily -morning. Peptides and AOX's.

Moisturizer: SC Triple Lipid Repair. SM HA. Defenage

SkinMedica Brightening System. Cyspera.

Retinoid: Effaclar (adapalene) or SkinMedica Retinol

Sunscreen: EltaMD. Coloescience. Heliocare. ISDIN

Eye Treatment: Defenage. SkinCeuticals eye repair

Hairloss: Nutrafol. Defenage topical. PRP. Revitalash eyebrows/eyelash. Minoxidil

Cleansers: Defenage, CLn, CeraVe, Nolio or _____

Botulinum Toxin: Jeuveau-Botox-Dysport-Daxi - May treat increased sweating of axilla and hands. TMJ issues respond well 3x/year.	\$300 Glabella, eyes, neck, TMJ \$150 Lips, Bunny lines, Forehead, Chin Dosage varies at each visit. Daxi \$225/450	<u>TOTAL</u>
Chemical Peels - range from superficial to medium depth. Very cost effective to improve signs of aging. 3-7 days of downtime. HSV Valtrex	Superficial \$200 Medium Depth \$500 Nonfacial add-on areas \$25	
CoolSculpting - Non-surgical contouring treatment that freezes fat that is eliminated from your body. 20-25% permanent reduction. See Emsculpt .	One area \$750 4 cycles \$2250	
Cosmetic Mole Removal	\$150 per mole	
Dermaplaning – Exfoliation and removal of facial hair and improves product efficacy.	\$85-150 Monthly is typical for patients	
Ear Piercing & Torn earlobe repairs	\$85 Earlobe repair \$550-800	
Emsculpt - Increase muscle strength and size. Fat stores decreased. Abdomen, buttocks, arms, thighs and calves. Series of 6 treatments	Based on number of treatments Abdomen usually \$3000 Maintenance discount pricing available	
Emsella - Electromagnetic energy to increase pelvic floor muscle strength for incontinence and improve sexual well-being. See ThermiVa	\$2000 series. Special maintenance pricing.	
Fillers - hyaluronic acid fillers such as Revanesse, Restylane, Juvederm, RHA . Lips, cheeks, nasolabial folds, under eyes, thin earlobes, hands. Sculptra - a collagen stimulant that lasts 2 years. 2-3 treatments every 2 mos. HSV Valtrex	Eyes \$750 HA fillers \$650-675 per syringe 3 syringes \$1800 Sculptra \$900/tx. Series of 3- \$2400	



Southlake Dermatology Cosmetic Procedures

817-251-6500. EXT 2219 www.SouthlakeDermatology.com

Fotofacial / IPL - Noninvasive to help improve rosacea and photodamage. Broken capillaries and brown spots. Three tx's 3 weeks apart.	Face or Chest \$400 Neck \$325 Spot areas \$135 +										
Fraxel - Laser resurfacing for more advanced wrinkles, pigmentation and acne scarring. Series of 3 every 4 weeks ideal. 3-5 days downtime. Pronox used. Topical BLT 1hr prior. HSV Valtrex	<table border="1" style="width: 100%; border-collapse: collapse;"> <tr> <td style="width: 60%;">Face and Neck</td> <td style="width: 40%;">\$1300</td> </tr> <tr> <td>Face</td> <td>\$1000</td> </tr> <tr> <td>Neck</td> <td>\$650</td> </tr> <tr> <td>Chest</td> <td>\$600</td> </tr> </table>	Face and Neck	\$1300	Face	\$1000	Neck	\$650	Chest	\$600		
Face and Neck	\$1300										
Face	\$1000										
Neck	\$650										
Chest	\$600										
Hair Laser Removal - Multiple sessions needed (6 weeks). Priced per area treated.	Axilla \$200 Bikini \$250 Lip & Chin \$150 Lip only \$100 Legs \$600										
Hand Rejuvenation - Filler is often used to minimize aging. Peels, IPL, Liquid N2 & Skinpen lighten the brown spots. \$ variable	Radiesse or HA Fillers typically \$1250. (2 syringes) Defenage Hand cream										
Hydrfacial - Cleanses, extracts & hydrates with nourishing ingredients. No downtime. Monthly	\$199. Dermaplane added \$250 Pairs well with Skinpen, Fraxel, Potenza										
Plasma Pen IQ - Resurfacing device for lip lines & focally deeper wrinkles. One treatment with 5 days of downtime. Topical BLT 1hr prior. HSV Valtrex	Eyes or Lip lines \$1000 Eyes AND Lip lines \$1500 Frown & Forehead lines- variable based on area tx										
Platelet Rich Plasma (PRP) Hair restoration - Three injections. Maintenance every 4-6 months.											
Potenza – RF Microneedling. Minimum downtime. Activates fibroblasts to increase collagen, tighten and improve signs of aging, sun-damage, acne scars and stretch marks. Series of 3-6; 4 weeks apart. Pronox used. Topical BLT 1hr prior. HSV Valtrex	<table border="1" style="width: 100%; border-collapse: collapse;"> <tr> <td style="width: 60%;">Face and Neck</td> <td style="width: 40%;">\$1500</td> </tr> <tr> <td>Face</td> <td>\$850</td> </tr> <tr> <td>Neck</td> <td>\$650</td> </tr> <tr> <td>Upper Arms</td> <td>variable</td> </tr> <tr> <td>Knees</td> <td>\$650</td> </tr> </table>	Face and Neck	\$1500	Face	\$850	Neck	\$650	Upper Arms	variable	Knees	\$650
Face and Neck	\$1500										
Face	\$850										
Neck	\$650										
Upper Arms	variable										
Knees	\$650										
Sclerotherapy - Spider vein treatment. Compression hose recommended for 2 weeks.	\$300-650										
Skinpen - Medical microneedling Improves signs of aging, sun-damage, acne scars and stretch marks. Series of 3-6. Minimal downtime & painless.	Face one tx \$350 Series of 3 \$900 Pairs well with Hydrafacial										
ThermiSmooth - Radiofrequency energy to tighten skin and reduction of cellulite and laxity. Series of 4 treatments. No downtime and painless.	Face \$350 Abdomen \$450 Thighs \$650										
ThermiTight - Radiofrequency energy for laxity of jowls and neck. Performed by Dr. Bowers.	\$3000										
ThermiVA - Radiofrequency energy to gently heat the vaginal tissue to rejuvenate, help dryness, incontinence, and sense of "well-being".	A series of 3 treatments done 4 weeks apart. \$3000 (45 min) see EMSELLA										
Ultherapy - Ultrasound energy treatment lifts the brows, face, and neck. One session depending on age and degree of laxity. Maintenance every 18-24 months. Priced per area treated. Pronox used. Topical BLT 1hr prior.	<table border="1" style="width: 100%; border-collapse: collapse;"> <tr> <td style="width: 60%;">Lower face & jawline</td> <td style="width: 40%;">\$2500</td> </tr> <tr> <td>Full Face</td> <td>\$3500</td> </tr> <tr> <td>Neck</td> <td>\$2500</td> </tr> <tr> <td>Brow lift</td> <td>750</td> </tr> </table>	Lower face & jawline	\$2500	Full Face	\$3500	Neck	\$2500	Brow lift	750		
Lower face & jawline	\$2500										
Full Face	\$3500										
Neck	\$2500										
Brow lift	750										

***Consultation required for photos & scheduling. May utilize telemedicine.**

_____ \$500.00 DEPOSIT REQUIRED FOR SELECT PROCEDURES. (ULTHERA, FRAXEL, POTENZA, PLASMA PEN)

_____ QUOTED PRICE IS VALID FOR 3 MONTHS FROM THE WRITTEN DATE.

_____ SPECIAL PRICING FOR PACKAGE TREATMENTS AVAILABLE WHEN PRE-PAYMENT IS MADE WHEN SCHEDULING.

_____ COSMETIC PROCEDURES CANNOT AND WILL NOT BE BILLED TO YOUR INSURANCE.

_____ 48 HOUR NOTICE TO CANCEL OR RESCHEDULE APPOINTMENTS. NO SHOW OR LATE CANCELLATION FEE \$100.

Questions? 817-251-6500 office@southlakedermatology.com

Consult photo send to: nurse@southlakedermatology.com



Southlake Dermatology Cosmetic Procedures
817-251-6500. EXT 2219 www.SouthlakeDermatology.com

PATIENT SIGNATURE & DATE

STAFF Name & Initials

January 2024 consult edition